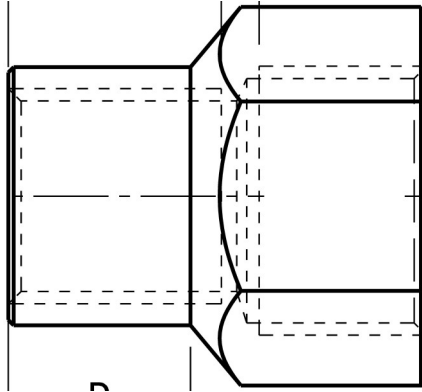


DATA SHEET:

# FEMALE X FEMALE ADAPTORS

Female x Female Adaptors are used to connect two male threads, maintaining the hazardous location certification and the overall integrity of the installation.



## Approvals & Specifications

ATEX/IECEX	<b>Exd IIC Gb &amp; Exe IIC Gb &amp; Ex tb IIIC Db IP6X</b> IEC/EN 60079-0, IEC/EN 60079-1, IEC/EN 60079-7, IEC/EN 60079-31, ATEX/94/9/EC
NEC/CEC	<b>Class I, Division 1 Groups ABCD</b> (->M50 Groups CD only) UL1203, UL514B, UL50 C22.2 Nos. 30, 0.5, 0-M, 45, 18.3-04, 94-M91 <b>AExd IIC / AExe II Class I, Zone 1</b> UL2279, UL60079-0, UL60079-1, UL60079-7, UL60079-1-1 E60079-0, E60079-1, E60079-7, E60079-1-1
Thread Gauging	<b>Metric 1.5mm Pitch- Medium Fit 6H</b> (Sizes M80 and larger are 2.0mm pitch as Standard) <b>NPT - Female L1+ 1/2 to + 2 Turns</b> Other Thread Forms Available on Application
Material Options	<b>Nickel Plated Brass 'N'</b> (-100 to + 150 °C) <b>316 Stainless Steel 'S'</b> (-100 to +850 °C)
Ingress Protection	<b>With Thread Sealant (Non-Hardening) IP 66</b> <b>68, NEMA 4 (316 Stainless 4X)</b> Without Thread Sealant IP54
Impact Resistance	<b>7Nm</b>

## Part Number Structure

Example - F1.20.1/2.N

- Female x Female Adaptor with hexagon body
- M20 Female Thread
- 1/2" NPT Female Thread
- Nickel Plated Brass

Product		Body Style				
<b>F</b>	Female x Female	<b>1</b>	Hexagonal			
		<b>2</b>	Diameter			
Thread Designation						
Metric	NPT	NPS	ISO	ISO	ET	PG
<b>16</b>	1/2	1/2S	1/2P	1/2T	1/2E	<b>7</b>
<b>20</b>	3/4	3/4S	3/4P	3/4T	3/4E	<b>9</b>
<b>25</b>	1	1S	1P	1T	1E	<b>11</b>
<b>32</b>	1 1/4	1 1/4S	1 1/4P	1 1/4T	1 1/4E	<b>13</b>
<b>40</b>	1 1/2	1 1/2S	1 1/2P	1 1/2T	1 1/2E	<b>16P</b>
<b>50</b>	2	2S	2P	2T	2E	<b>21</b>
<b>63</b>	2 1/2	2 1/2S	2 1/2P	2 1/2T	2 1/2E	<b>29</b>
<b>75</b>	3	3S	3P	3T	3E	<b>36</b>
<b>80</b>	3 1/2	3 1/2S	3 1/2P	3 1/2T		<b>42</b>
<b>85</b>	4	4S	4P	4T		<b>48</b>
<b>90</b>						
<b>95</b>						
<b>100</b>						
<i>Note: Metric sizes M80 and larger are 2.0mm pitch is Standard, for 1.5mm pitch add *</i>						
Material						
<b>N</b>	Nickel Plated Brass					
<b>S</b>	316 Stainless Steel					